

# SYSTEM DESIGN OF INFORMATION MANAGEMENT FUND ADMINISTRATION AND PUBLIC ADMINISTRATION (CASE STUDY : RW 01 KELURAHAN CIPONDOH INDAH)

**Muhammad Ikhsan**

Sistem Informas Universitas Bakrie  
Email : [Muhammad.ikhsan9383@gmail.com](mailto:Muhammad.ikhsan9383@gmail.com)

**Hoga Saragih**

Sistem Informas Universitas Bakrie  
Email : [hoga.saragih@bakrie.ac.id](mailto:hoga.saragih@bakrie.ac.id)

## Abstrak

*All the recording of the events of administration of population, births, deaths, residents moved in and fund the citizens must first noted by RT, then reported to the RW, and continue to the village. In the case study Cipondoh Indah Village recording system previously encountered many obstacles due to the storage of data in hardcopy resulting data on demographic events are broken or missing. The process of delivering a report on population is not real time because the wait for the report of each device associated. But to run the administration and citizens administration fund requires an information system that is able to accommodate all of the recording of the events that occur in the population. The purpose of this research is to produce a design of information systems administration and fund management resident population online in the form of web-based dashboard using design methods WISDM (Web Information System Development Methodology) results will be applied to hamlet 01 Cipondoh Indah Kota Tangerang.*

**Kata kunci:** Information Systems, Web Dashboard, Web Information Systems Development Methodology (WISDM)

## 1. Introduction

Indonesia is a developing country with a huge population, recorded in 2015 according to Central Bureau of Statistics reports the Indonesian population reaches approximately 250 million people<sup>[1]</sup>. With the rapid growth of population in Indonesia, then in line with the data about the population will increase. no doubt if there will arise many problems related to this demographic data. In general, problems that occur due to the village, the Neighborhood (RT), including Hamlet (RW) usually still use paper to report demographic data of their citizens. There is a possibility of paper containing the report data is missing or scattered population and when it needs to be hard to find such data and also not yet integrated reporting between the respective parties ranging from RT to RW, RW to the village chief or vice versa. Included in this case as an object to be studied is in RW.01 Village Cipondoh Cipondoh Scenic District of the city of Tangerang.

The ability of management information systems technology that is well and remains in line with business interests in essence lead to the advancement of business process or service organization to be faster, better and cheaper so it will improve the competitiveness or increasing the satisfaction of the organization. In the case of public services provided by the agency to the public, the inability of institutions in managing technology / information systems and not in line with the development policy will only add a sense of dissatisfaction by the public service. While maintaining confidentiality, availability, and integrity of demographic data is the responsibility of agencies that have to be met<sup>[2]</sup>.

At Village Indah Cipondoh administrative data on demographic data such as population data, date of birth, mortality data, the data collected relocate residents still centered on the document or report given by the pillars of its citizens. These data are arguably not yet fully integrated with each other because the data on population data, mortality data,

birth data, citizen data moved rely only when an incident occurs such as voter registration for the elections, a list of residents moved in, a list of people died, and so on other. Recording of the population and fund administration fees residents still use manual methods are recording through the paper or journal that exist on every device RT and RW. coordination between the chairman of the Neighborhood with Hamlet and villages not run optimally. It was proven that the findings of demographic data about the double or unregistered. Coordination should be consistent between the parties so that no issues related to population data.

By looking at the current system in the village Cipondoh Indah where the system does not yet support the coordination between the Neighborhood, Hamlet and Village needed an information system that can perform recording distributed online, where the system will be used by the head of the Neighborhood, chairman of the Hamlet and the village clerk so that the population data is not focused only on wards.

Based on the background that has been described, it can be the formulation of the problem of how to design and build an information system population administration and management of funds in each RT (Neighbourhood), RW (Hamlet), headman in the village Cipondoh Indah City Tangerang.

The purpose of this research is

1. Designing and building an information system population administration and management of funds of citizens in each neighbourhood and hamlet in the village Cipondoh Indah Kota Tangerang.
2. Doing examination population information system administration and management of funds of citizens to know the results of acceptance of the application by the user

## 2. LITERATURE

Population information system is an information system designed to simplify the process of population administration as one of the measures to assist the work of the registration of residence according to the standards required by the government. There are two information systems that have been implemented by the government<sup>[3]</sup>, namely:

1. Population Management Information System (SIMDUK) is SIMDUK is a policy implemented at the district / city, put forward to address the status of residence with all amendments thereto. SIMDUK an application to manage population data area that includes bio Population, Family Card (KK), Identity Card (KTP), Certificate of Population and Civil Registration Act. Application can be used to

manage the population data at the sub-district or village, but not all villages implementing these information systems.

2. Administration Information System (SIAM) is an information system that utilizes information and communication technologies to facilitate the management of information at the level of the organizers and the implementing agencies as unity intended to held population administration on a national scale integrated and orderly.

According to Government Regulation No. 37 Year 2007 on the Implementation of Law No. 23 of 2006 concerning public Administration, Management Siak aims:

- a. Improving the quality of services for population registration and civil registration.
- b. Provides data and information on national and regional scale regarding the outcome of the population and civil registration are accurate, complete, current, and easy access.
- c. Systematic realize the exchange of data via a single identifier systems, while ensuring confidentiality.

### Dashboard

Information dashboard is a tool to present information overall, solutions for the information needs of the organization<sup>[4]</sup>. Information dashboard provides the interface with a variety of forms such as diagrams, reports, visual indicators, the alert mechanism, combined with dynamic and relevant information<sup>[5]</sup>. Information Dashboard collect relevant information from various parts of the organization, consolidate, and deliver safely, quickly, with personalized according to the user's role within an organization<sup>[7]</sup>

### Programming Language

Programming language is the language used by developers to create or develop a software. Programming language is a language that is designed to portray the calculation can be done by machine, especially a computer. Programming language that can be used to control machinery, processing algorithm or as a tool to be communication between humans and machines<sup>[8]</sup>.

### PHP (Hypertext Preprocessor)

PHP is a *server-side scripting language* that can be used to create dynamic web. PHP is an *open source* product that can be used for free without having to pay to use it. PHP interpreter to execute PHP code on the *server side* is called (*server-*

side), whereas in the absence of the PHP interpreter, then all scripts and PHP applications created can not run [9].

PHP code can be inserted into HTML pages and will be executed every time a page is opened (runtime). The PHP code will be interpreted on a web server and will generate HTML or other output that can be seen by visitors [10]





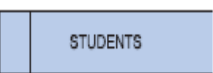
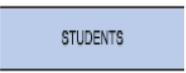
**Database**

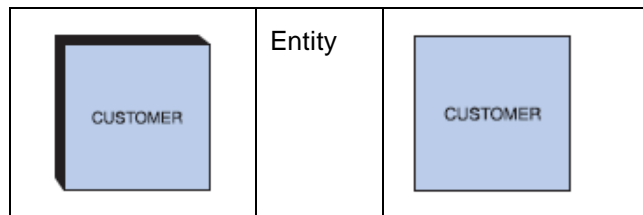
Data are facts about an object such as a human, objects, events, concepts, state, and so on which can be recorded and have meaning implicitly. Data can be expressed in the form of numbers, characters or symbols, so that when the data is collected and interconnected then known as the database [11] The database has a variety of data sources in data collection, varying degrees of interaction events of the real world, designed and built in order to be used by several users for various purposes [12]

**Data Flow Diagrams (DFD)**

DFD is a tool-oriented system design data flow with the concept of decomposition can be used for the delineation of analysis and system design that easily communicated by the professional system to the user or the programmer. DFD uses four basic symbols that represent processes, data flow, the data stores and entities. There are several different versions of the existing symbol DFD is a component according Yourdan and DeMarco and components according to Gene and Serson but they all have the same purpose and goals (Shelly & Rosenblatt, System Analysis and Design 9th Edition, 2012).

Table 2.1 Symbols DFD (Shelly & Rosenblatt, System Analysis and Design 9th Edition, 2012)

Gane and Serson Symbol	Name Symbol	Yourdan Symbol
	Process	
	Data Flow	
	Data Stores	



**Web Development Life Cycle**

Web development life cycle is a stage of activities to be done by web developers to produce a web which can be operated by the wearer. There are five phases carried out in this process [13]

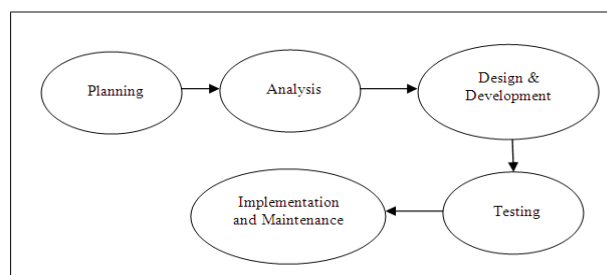


Figure 2.1 Web Site Development Life Cycle (Kamatchi & Singh, 2013)

1. Planning  
Activities start of construction of a website. Where in this activity web developer and user or users of the website determine the purpose of the web site.
2. Analysis  
A series of activities to analyze information needs of the user, analyzed systematically in the form of the functionality of the application system.
3. Design and Development  
Perform the design required in making the website and at the same coding to create a website that has been in accordance with the design.
4. Testing  
Tested the websites that have been built if it has been run in accordance with the plan that has been agreed upon at the beginning.
5. Implementation and Maintenance  
Perform the installation process on the website has been created and perform website maintenance on a regular basis.

**Web Information System Development Methodology**

WISDM (web information system development methodology) is a method in the development of

systems that use this approach to make something fast and phased program that can immediately dievauasi by the user. In addition WISDM also makes the system development process becomes faster and easier teritama on the state of the user's needs is difficult to be identified. Broadly speaking, the target WISDM are as follows<sup>[14]</sup>:

1. Reduce the time before the user sees something concrete out of business systems development.
2. Providing rapid feedback from users to developers.
3. Help illustrate the user with fewer errors.
4. Improving the understanding of developers and users against targets that should be achieved by the system.
5. Making the involvement of users is very meaningful in the analysis and design of systems.

There are five parts to be discussed in this WISDM methodology:

1. Organizational analysis  
From the analysis of whether the requirement is expected later this organization will yield benefits or otherwise.
2. Information analysis  
At this stage it will be discussed about the requirement specification. From what it takes organization to stage process.
3. Work design  
At this stage the design is user satisfaction.
4. Technical design  
At this stage, be allowed to software models. Here will be discussed what is needed to build web applications.
5. Human computer interfaces  
At this stage, will be speaking part of the user interface, which will show the shape of the web is built.

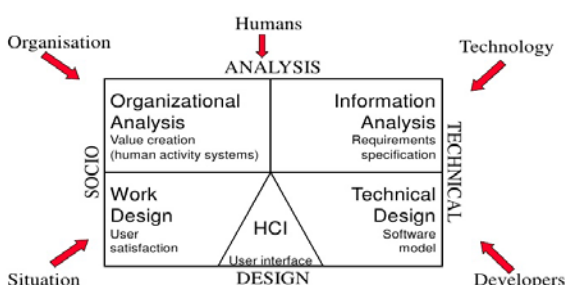


Figure 2.2 Web Information System Development Methodology (Shaffi & Al-Obaidy, 2013)

## Testing methods

There are some differences in the methods used in a testing software, namely ([http //: academia.edu/](http://: academia.edu/), 2015):

1. Testing *Black Box*  
*Black box* testing is testing techniques without having knowledge of the inner workings of the application. Testers have the architecture of the system and do not have access to the source code. Usually, when performing *black box testing*, testers will interact with a *user interface* system to provide input and check the *output* without knowing how internal logic of the system is working.
2. *White Box* Testing  
*White-box* testing is a detailed investigation of the internal logic and structure of the code. *White-box* testing is also called testing glass or open box testing.
3. *Grey Box* Testing  
*Gray box* testing is a technique to test applications with limited knowledge of the workings of internal applications.

## 3. RESEARCH METHODOLOGY

### An Overview of Research Object

Village of Cipondoh Indah is a village in the city of Tangerang, Banten Province. Where in the village there are 10 neighborhoods and 119 neighborhood with an area of 1:39 km<sup>2</sup> and has a population of approximately 23,154 people. Where collection is still in the form of dossiers submitted by the neighbourhood or hamlet. The absence of a system that can integrated between the existing data on the RT, RW and urban renewal led to gaps in the data of citizens. One such inequality is still the data of people who died were otherwise still living in the village administration, citizen data in and out too often not updated. On the other hand a device such as the neighbourhood, hamlet are also rarely reported if there the people experiencing the convergence of data changes because of not the right time to meet. The research object studied by the researchers is on hamlet 01 Cipondoh Indah Village Tangerang which is a pilot project in this study and due also to the entire device RW expressed readiness to switch from the old system using the new system. According to the father as the head of hamlet 01 Lukito of 15 head of RT in RW 01 overall can operate the computer and internet.

## System Design Analysis Method

System development method used to design and build the system in this research is to use the model WISDM (*web information system development methodology*). This method can provide an overall picture of the system to be designed. This model can also accept the changes if there is an *update* and *review* of potential users.

The stages of a floating system in this research are:

- a. *Organizational analysis*  
At this stage later discusses whether the organization will generate profits or otherwise. To determine the researchers tried to analyze the needs by direct observation to Cipondoh Indah village.
- b. *information Analysis*  
At this stage of the analysis conducted to determine the needs of users Based on the data and information that has been obtained previously. To find the user's needs at this stage will describe the system design approach and DFD Context Diagram.
- c. *Work Design*  
At this stage, talked about *satisfaction user* or customer satisfaction. Customer satisfaction can be viewed from various aspects and to determine customer satisfaction researchers doing observation *offline* by giving questionnaires to the population information system and the management of funds of citizens, namely the existing devices, especially devices village Cipondoh Indah served in RW 01
- d. *Technical Design*  
After performing the previous stage, researchers went at the stage of *technical design*. At this stage it will be discussed software what is needed to build population information system administration and management of the funds citizens.
- e. *Human Computer Interface (HCI)*  
At this stage it is part of *the user interface* to be generated by the population information system and the management of the funds citizens.

## Coding System

At this stage, the design resulting from the analysis of the design of the system will be implemented into the programming language through the *coding* process. Design of information systems

population administration and fund management based citizens online, where the programming language used is PHP programming language while using the MySQL database.

## Testing

Testing do with knowing whether all the functions and features of the application in accordance with the functions and features. Testing process is done by testing *black box* and *usability testing*. Testing process aims to determine whether the application is completely in accordance with the planning and *stakeholder desires*.

## Implementation

Implementation is the process of doing the application of the system of the research object is Cipondoh Indah Village Tangerang City. Application form placed on the web server hosting, server hosting election intends to reduce costs and do not need to prepare their own server and can be operated for 24 hours as needed. The system can only be accessed by internal party Cipondoh Indah village that has been given access to that administrative officer, head of the RW and Chairman of RT.

## Method of collecting data

Data collection methods used in this research that a combination of qualitative and quantitative. A qualitative approach in the form of interview, observation and literature study. While the quantitative approach to measure the usefulness of the system was designed using a questionnaire.

## Qualitative data collection Approach

Qualitative research is defined as a process of investigation to understand a social problem or a human problem, based on the creation of a complete holistic picture formed by the words, reported a detailed view of the informant, and arranged in a scientific background. Stages collection of quantitative data in this study include:

1. Interview  
Data collection was done by a question and answer directly to the head village, chairman of the residents of 01 villages in harmony Cipondoh Indah Kota Tangerang.
2. Observation  
The data collection is done by directly observing the administrative processes of citizens and residents of the charging process

financial data in RW 01, Village Cipondoh Indah Kota Tangerang.

3. Study of literature

With herd data search information through journals, research, and books that are relevant to this research, helping researchers to formulate the problem, review the previous studies, and interpretation of previous studies.

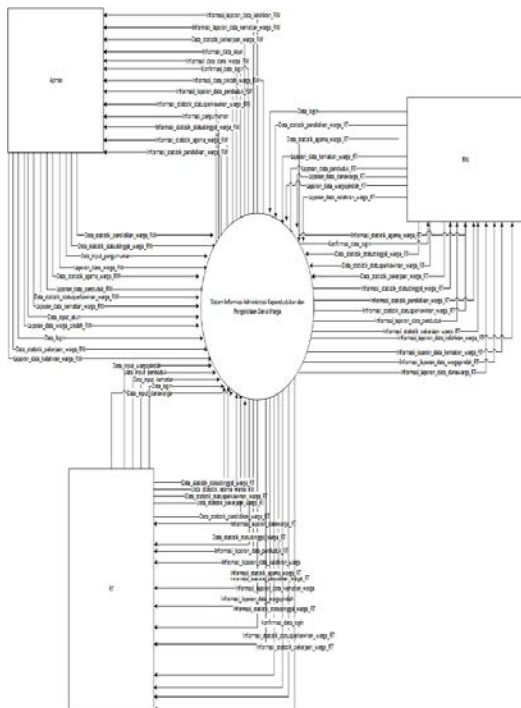
4. DISCUSSION

One goal of this research is to build information systems population administration and fund management based citizens online. There are several steps that must be done in order to make the software in accordance with the expected goals. The design software is a procedure that must be done to generate a new system.

Analysis and Design System

System analysis is the decomposition of an information system into its component parts with a view to identifying of needs that are expected to be able to design the right system. Based on the data that has been obtained by the analysis research to find solutions to problems. While the design to make sure the system is built is already through the stages of development procedures.

Context Diagram



Context Diagram Figure 4.1 Population Administration Information System and Citizens Fund Management

Composer DFD

In general, information systems have 10 subsystems that login account data, manage account data, population data management, data management birth, manage mortality data, data management community moved residents fund data management, view statistics of the population, and data management announcement. At subsystem login account data contained admin login process, RW login, login RT. On account of data management subsystem contained input process account, view tables in your account, edit account data, and delete account data. In the data management subsystem population are resident input process, view the table population, population data edit, and delete the data population. On account of data management subsystem contained input process account, view tables in your account, edit account data, and delete account data. At birth there is a data management subsystem input process of birth, view tables of birth, date of birth edit, and delete the data of birth. On mortality data management subsystem contained input process of death, mortality table view, edit mortality data, and delete data is death. In the data management subsystem residents moved there to move the process of citizen input, view tables of citizens to move, edit data of citizens to move, and delete account data. In the data management subsystem resident funds are funds input process of the citizens, the citizens of funds table view, edit data resident funds, and fund data delete citizens. In the print subsystem report print process report contained data on population, birth data print reports, print reports mortality data, print data reports relocate residents, and residents moving print data reports. In view subsystem population statistics are the statistical view of religious citizens, residents view education statistics, employment statistics citizens view, view statistics civil religion, marital status citizens view statistics, and view statistics residency status of citizens.



Figure 4.2 Hierarchy Module Software

**Data Flow Diagram Level 1**

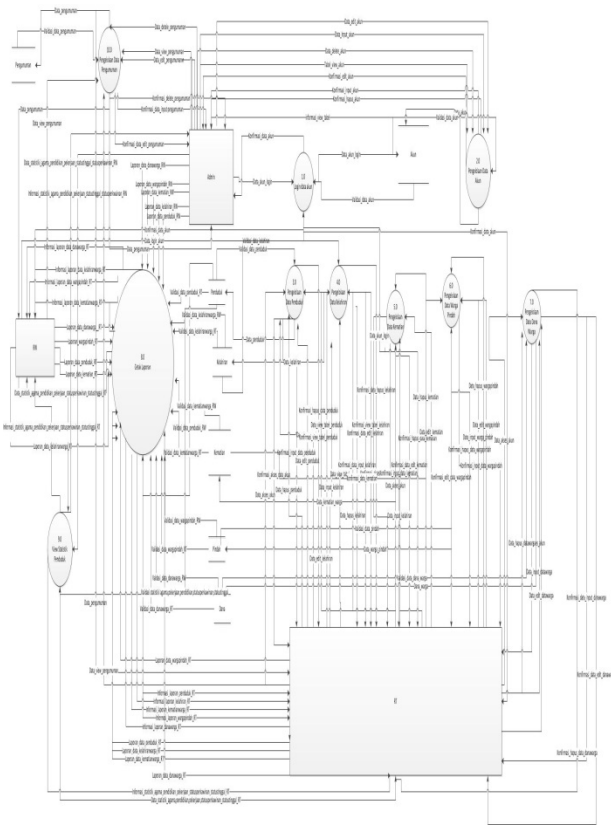


Figure 4.3 DFD Level 1

**Work Design**

The next stage, analyze user satisfaction or user satisfaction that can be viewed from various aspects. Many ways to determine customer satisfaction, one of them did a field survey by distributing questionnaires to users of the system. This measurement is performed to assess the success of the application is built.

Measure process was conducted by questionnaire about the criteria that the system is feasible to use. Table 4:21 is a form of assessment categories within the questionnaire distributed to the village Cipondoh Lovely, the users of the information system of population administration and fund management Cipondoh Indah residents in the Village.

performance	Hope	Score
Very good	Very important	5
Good	Good	4
moderate	moderate	3
Not good	Less Important	2
Very Not Good	Very unimportant	1

Questionnaires were distributed to 15 respondents who are users of information systems population administration and fund management RW 01 residents in the village Cipondoh Indah. Assessment is conducted by CSI (*Customer Satisfication Index*). The higher the value of CSI, the higher level of interest and satisfaction the user There are two variables that are calculated as a condition for calculating CSI, on this observation wear performance and expectations with application performance will be calculated with the expectations of users the application thus creating value for user satisfaction in using the application. CSI is calculated using the formula:

$$CSI = \frac{T}{5Y} \times 100 \%$$

Keterangan :

T : Number of columns (S)

5 : Top Value Measurement Scale

Y: Number of Columns (I)

Criteria *Customer Satisfication Index* (CSI) refers to the interpretation criteria Scores conveyed by (Riduwan, 2009)

Table 4:1 Interpretation Criteria Score (Riduwan, 2009)

number	Criteria
Score 0% - 20%	Very Dissatisfied
21% - 40%	Not satisfied
Score 41% - 60%	Quite satisfied
Score 61% - 80%	Satisfied
Score 81% - 100%	Very satisfied

Questions and statements used as an attribute to the questionnaire are:

1. I am satisfied with the presentation of the output provided by the information system of population administration and management of the funds citizens
2. I am satisfied with the display of this information system
3. This information system is a representation of the needs in my work
4. All requirements of the job I have been accommodated in this information system

With questionnaires given to the user, it is known the value of user interest with the design of the results produced. The respondents are directly trying to design information systems applications population administration and fund management community. Here are the results of respondent data applications.

Table 4:2 Respondents CSI Data Results

No	Q1		Q2		Q3		Q4	
	P	I	P	I	P	I	P	I
1	4	4	4	4	5	5	4	5
2	5	5	4	5	5	5	4	5
3	5	5	5	4	5	4	4	5
4	4	5	4	4	5	5	4	5
5	4	4	4	4	5	4	4	5
6	4	5	4	5	5	5	4	5
7	5	5	5	5	5	5	5	5
8	4	4	5	5	5	5	4	4

9	4	4	4	5	5	5	4	4
10	5	5	5	5	4	4	4	4
11	4	5	4	5	5	5	4	5
12	4	5	4	5	5	4	4	4
13	4	5	4	5	5	5	4	5
14	4	5	4	5	5	5	4	4
15	4	4	4	4	5	5	4	3

From the results table to measure the respondents showed CSI to portray the user response to the application design. The following calculations from the data in Table 4:22 CSI

Table 4:3 Scores CSI User Response

No	Attribute	Performance (P)	Index (I)	Score (S) I x P
1	Satisfaction presentation output	4,27	4,67	19,94
2	Satisfaction with the user interface	4,27	4,67	19,94
3	Representation of the user's needs	4,83	4,73	23,32
4	All the user needs accomodated	4,07	4,60	18,44
Total		17,54	18,60	81,64

$$CSI = \frac{81,64}{5.17,54} \times 100\% = 93.09\%$$

CSI value obtained was 93.09%, which illustrates the results of users are very satisfied with the information system of population administration and fund management community. That is up to the stage of development of information systems population administration and management of funds of citizens can be received by users because given the huge CSI value.

### Design Database



After analyzing the system, the next step system design. where in the design of this system can provide an overview of the system are made. By using models and several steps:

### 1. Conceptual Database

The design is conceptually a first step in designing a database. This design contains the components of the workflow process occurs. It is necessary for a full understanding of the processes that occur at the relevant organization to be able to design a database.

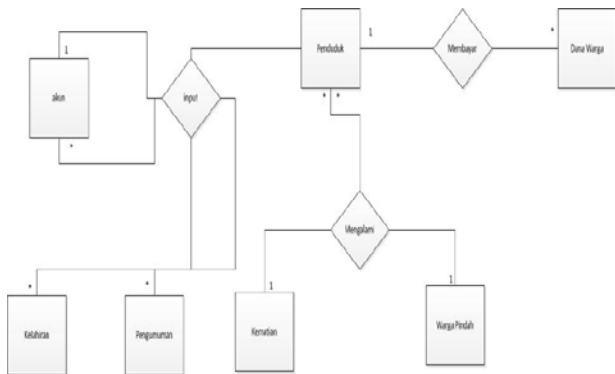


Figure 4.4 Conceptual Database

From concept database in Figure 4:21 explained that one can account enter many accounts, one account can enter a lot of data on population, one account can enter a lot of data of birth, one account can enter a lot of data of birth, one account can enter a lot of data community moved one account can enter a lot of data resident fund, the account can enter many announcements.

### Logical Database

From the concept that has made mapping more detail about the design that will be implemented in the database. Perancangan logic database depends on the DBMS used. Steps to be done is to determine the entities, relationships and attributes menentuan and key at each entity.

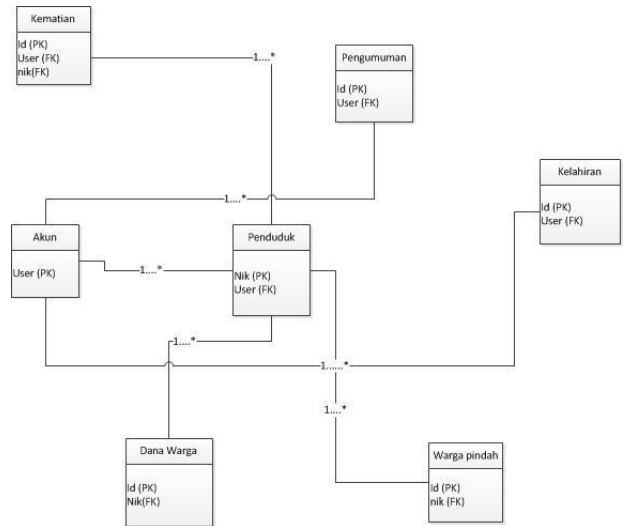


Figure 4.5 Logical Database

### Physical Database

Relational Database Management System (RDBMS) is a database table that is linked by a foreign key to show the relationship. This design is a collection of data that are connected to one another.

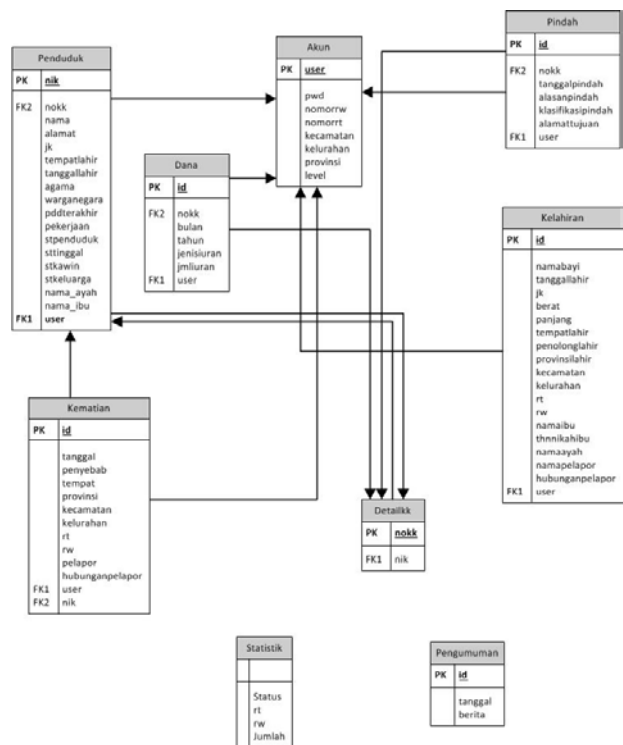


Figure 4.6 Physical Database

### File structure

In terms of designing a table structure is needed, covering the table names, attribute names, data types, as well as compliance data such as primary keys, foreign keys, and so on. The design of this application's data base terdiri of tables as follows:

Nama file : akun  
 Primary Key : user  
 Foreign Key : -  
 Function : storing account data

Table 4:4 Table Structure Akun

Nama Field	Type Data	Constraint
user	Varchar (10)	Primary Key
pwd	Varchar (10)	Null
nomorrw	Varchar (10)	Null
nomorrt	Varchar (10)	Null
kecamatan	Varchar (10)	Null
kelurahan	Varchar (50)	Null
provinsi	Varchar (50)	Null
level	Varchar (20)	Null

Nama file : penduduk  
 Primary Key : nik  
 Foreign Key : user  
 Function : storing data on population

Table 4:5 Table Structure Penduduk

Nama Field	Type Data	Constraint
nokk	Varchar (20)	Foreign Key
nik	Varchar (20)	Primary Key
nama	Varchar (100)	Null
alamat	Varchar (200)	Null
jk	Varchar (10)	Null
tempatlahir	Varchar (50)	Null
tanggallahir	date	Null
agama	Varchar (20)	Null
warganegara	Varchar (20)	Null

pddterakhir	Varchar (20)	Null
pekerjaan	Varchar (50)	Null
stpenduduk	Varchar (20)	Null
sttinggal	Varchar (20)	Null
stkawin	Varchar (20)	Null
stkeluarga	Varchar (50)	Null
nama_ayah	Varchar (50)	Null
nama_ibu	Varchar (50)	Null
user	Varchar (10)	Foreign Key

Nama file : kelahiran  
 Primary Key : id  
 Foreign Key : user  
 Fungsi : store the data of birth

Table 4.6 Table Structure Kelahiran

Nama Field	Type Data	Constraint
namabayi	Varchar (50)	Null
tanggallahir	date	Null
jk	Varchar (10)	Null
berat	Varchar (10)	Null
panjang	Varchar (10)	Null
tempatlahir	Varchar (50)	Null
penolonglahir	Varchar (50)	Null
provinsilahir	Varchar (50)	Null
kecamatan	Varchar (50)	Null
kelurahan	Varchar (50)	Null
rt	Varchar (10)	Null
rw	Varchar (10)	Null
namaibu	Varchar (20)	Null
thnnikahibu	Varchar (50)	Null
namaayah	Varchar (50)	Null
namapelapor	Varchar (50)	Null

hubunganpelapor	Varchar (50)	Null
id	int (11)	Primary key
user	Varchar (10)	Foreign key

Nama file : kematian

Primary Key : id

Foreign Key : user,nik

Fungsi : store data death

Tabel 4.7 Table Structure Kematian

Nama Field	Type Data	Constraint
nama	Varchar (50)	Null
tanggal	date	Null
penyebab	Varchar (50)	Null
tempat	Varchar (50)	Null
provinsi	Varchar (50)	Null
tempatlahir	Varchar (50)	Null
kecamatan	Varchar (50)	Null
kelurahan	Varchar (50)	Null
rt	Varchar (10)	Null
rw	Varchar (10)	Null
pelapor	Varchar (20)	Null
hubunganpelapor	Varchar (50)	Null
id	int (10)	Primary key
user	Varchar (10)	Foreign key
nik	Varchar (20)	Foreign key

Nama file : pindah

Primary Key : id

Foreign Key : user

Function : store data of citizens to move

Tabel 4.8 Table Structure Warga Pindah

Nama Field	Type Data	Constraint
nokk	Varchar (20)	Foreign Key
nama	Varchar (50)	Null
tanggalpindah	date	Null
alasanpindah	Varchar (50)	Null
klasifikasipindah	Varchar (50)	Null
alamatujuan	Varchar (100)	Null
id	int (11)	Primary key
user	Varchar (10)	Foreign key

Nama file : dana

Primary Key : id

Foreign Key : user, nokk

Fungsi : store data resident funds

Table 4.9 Table Structure Dana

Nama Field	Type Data	Constraint
nokk	Varchar (20)	Foreign Key
bulan	Varchar (10)	Null
tahun	Varchar (10)	Null
jenis asuransi	Double (150)	Null
id	int (11)	Primary key
user	Varchar (10)	Foreign key

Nama file : pengumuman

Primary Key : id

Foreign Key : nokk, user

Function : Store data announcement

Table 4.10 Structure Table Pengumuman

Nama Field	Type Data	Constraint
tanggal	date	Null
Berita	Varchar (500)	Null
id	int (11)	Primary Key

Nama file : statistik

Primary Key : -

Foreign Key : -

Function : Taking statistics resident status

Tabel 4.11 Structure Table Statistik

Nama Field	Type Data	Constraint
status	Varchar (20)	Null
rt	Varchar (10)	Null
rw	Varchar (10)	Null
jumlah	Varchar (10)	Null

Nama file : detailkk

Primary Key : nokk

Foreign Key : nik

Fungsi : mengambil statistik status penduduk

Tabel 4.12 Struktur Tabel Statistik

Nama Field	Type Data	Constraint
nokk	Varchar (20)	Primary Key
nik	Varchar (10)	Foreign Key

### User Interface

A view is the most important thing in software to perform *interface* is the result of delivering data in the form of information that is easily understood by users. Here are some of the display *interface* of the information system of population administration and fund management Cipondoh Indah..



Figure 4.7 Login Interface

addressing the *form* page where the *user logs in* accordance with the *username* and *password* of a user. *Login* button function validation *username* and *password* from the *user*, if one does not match then the user can not enter the menu page, if appropriate, the user is directed to a page menu. *Cancel* button to delete all contents in

the *textbox*.

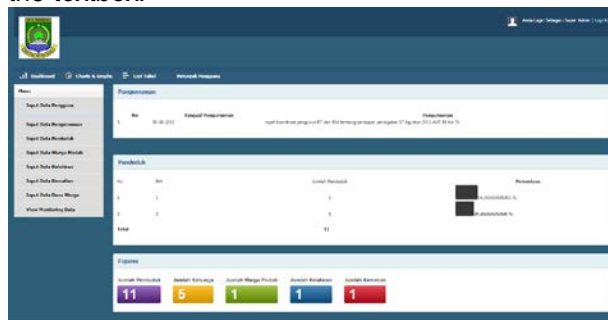


Figure 4.8 Home Page

At figure 4.8 the picture shows the menu for admin where on the page showing announcements table, a table of population and percentage of population per RW. Later on this page there is a box that displays the total population, the total number of birth data, the total number of residents moving the data, the total number of residents overall mortality data, and total amount family in village Cipondoh Indah. On this page there is a new menu that is at the top containing dashboard, chart & graph which contains data statistics civil religion, statistical data is the education of citizens, statistical data is the job of citizens, data statistics marital status of citizens, statistical data is the status of living of citizens, then the menu list table which contains account data tables, resident tables, tables, births, mortality tables, tables residents moved in, residents of funds table. Maps menu, there are side menu that contains the input of input the user's account, input data on population, data input births, input mortality data, data input residents moved in, the data input of funds of citizens, and view monitoring that contains print reports on population data, print the data of birth, print mortality data, print the data community moved fund data print residents. menu contains a chart and graph statistics civil religion, education statistics citizen, resident employment statistics, statistics status of citizens moving, marital status statistics. then the Table menu contains accounts table, table resident, tables birth, mortality tables, charts and tables residents moved funds of citizens, and the menu is a user manual instructions what rights could be used by the user.

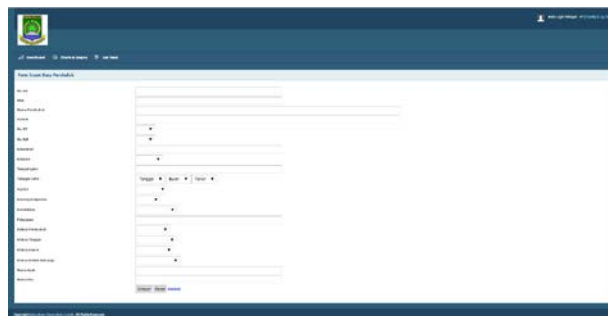


Figure 4.9 Form Filled Data Populated

In the figure 4.9 shows a form to store data populated by box no kk, nik, the name of a resident address, no

household, no rw, municipality, gender, place of birth, date of birth, religion, nationality, last education, employment, resident status, residence status, family status, father's name, mother's name. Then the save button to save the data reset button to delete the entire contents in the box area that has been filled and returned will refer the user to the menu page.

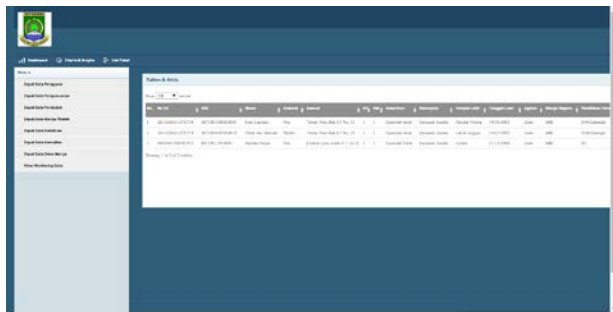


Figure 4.10 Table of Population

shows a table of population data is a submenu of the list table. On the table there is a container box search to search about anything in the table according to the population of the typed input. On page table resident contains nik, no kk, name, address, rt, rw, municipality, gender, place of birth, date of birth, religion, nationality, last education, employment, residency, residency status, family status, name of father, mother's name. Then there is the edit function to edit data that resident and the delete function to delete the population data will be deleted.

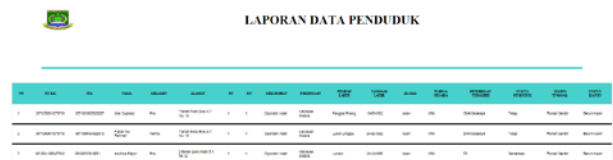


Figure 4.11 Report Populated

At 4.11 this picture shows a report on the data reported in the RT. Report data in the form of no kk, nik, name, gender, address, no RT, no RW, village, occupation, place of birth, date of birth, religion, education, status of residence, marital status, father's name and mother's name.



Figure 4.12 Statistic for admin page

At Figure 4.12 This is a page that shows statistics for statistics admin types of work citizens as a whole by hamlet. Which contain no rw, jobs, the number of people in the job, percentages and charts of these percentages.

### 5. Conclusion

Based on the analysis, design, implementation and administration of population testing-based information system online at the Village Cipondoh Indah City Tangerang particularly RW 01, the writer can took this conclusion and advice in accordance with a system that has been created

After analyzing and designing information systems administration and fund management resident population-based *online* conclusions that can be drawn from the results of this thesis is:

Population Administration Information System and Citizens Fund Management has successfully designed and constructed in the form of draft DFD-based online application form by using the website that has been implemented which can be accessed by neighbourhood, hamlet, Village Cipondoh Indah on site [www.admindukcipondohindah.com](http://www.admindukcipondohindah.com)

Suggestion  
Demographic information systems administration and management of the funds citizens to be improved so that it can be used by the District, the Department of Population and Civil Registration, and the Commission.

### Bibliography

- [1] <http://www.bps.go.id>. (2015). *Laporan Proyeksi Penduduk menurut Provinsi*. Dilihat pada 21 Maret 2015
- [2] Setiadi, H., A.Hasibuan, Z., & Fahmi, H. (2007). Perubahan Arsitektur Database dan Aplikasi Administrasi Kependudukan yang Sejalan dengan Otonomi Daerah. *Jurnal Sistem Informasi MTI UI Vol. 3 - No.1*.
- [3] Astuty, F. A. (2014). Penerapan Sistem Informasi Administrasi Kependudukan (SIK) pada Dinas Pencatatan Sipil dan Administrasi Kependudukan Kabupaten Maros. Makassar.
- [4] Few, S. (2006). *Information Dashboard Design*. New York: O'Reilly.
- [5] Gonzales, T. (2006, December 10). BrightPoint Consulting, Inc. Retrieved Agustus 10, 2015, from *Dashboard Design: Key Performance Indicators & Metrics - Choosing the Right Data to Display*: <http://www.brightpointinc.com/dashboard-design-key-performance-indicators-metrics/>.
- [6] Astuty, F. A. (2014). Penerapan Sistem Informasi Administrasi Kependudukan (SIK) pada Dinas Pencatatan Sipil dan Administrasi Kependudukan Kabupaten Maros. Makassar.
- [7] Hariyanti, E. (2008). *Pengembangan Metodologi Pengembangan Information Dashboard untuk Monitoring Kinerja Organisasi*. Konferensi dan Temu Nasional Teknologi Informasi dan Komunikasi untuk Indonesia (pp. 1-5). Jakarta: e-Indonesia Initiative 2008 (eII2008).
- [8] Oyenike, B. (2012). Comparative Analysis of Some Programming Languages. *Transnational Journal of Science and Technology*.
- [9] Prawitasari, I. (2012). Rancang Bangun dan Analisis Performa Homeschooling Adaptive Learning System Berbasis PHP dan MySQL. Depok.

- [10] Welling , L., & Thomson, L. (2001). PHP and MySQL Web Development.
- [11] Elmasri, R., & Nevathe, S. B. (2011). Database System 6th Edition. United States: Pearson.
- [12] Waliyanto. (2000). Sistem Basis Data Analisis dan Pemodelan Data. Yogyakarta: J&J Learning.
- [13] Kamatchi, R., & Singh, S. (2013). Software Engineering: Web Development Life Cycle. In International Journal of Engineering Research, Vol 2, No. 3..
- [14] Mawardi, S., Satria, E., & Tresnawati, D. (2012). Perancangan Web Kelas Online dengan Metodologi WISDM Berbasis Learning Management System di MAN Pemeungpeuk. Jurnal Algoritma, Vol 9.