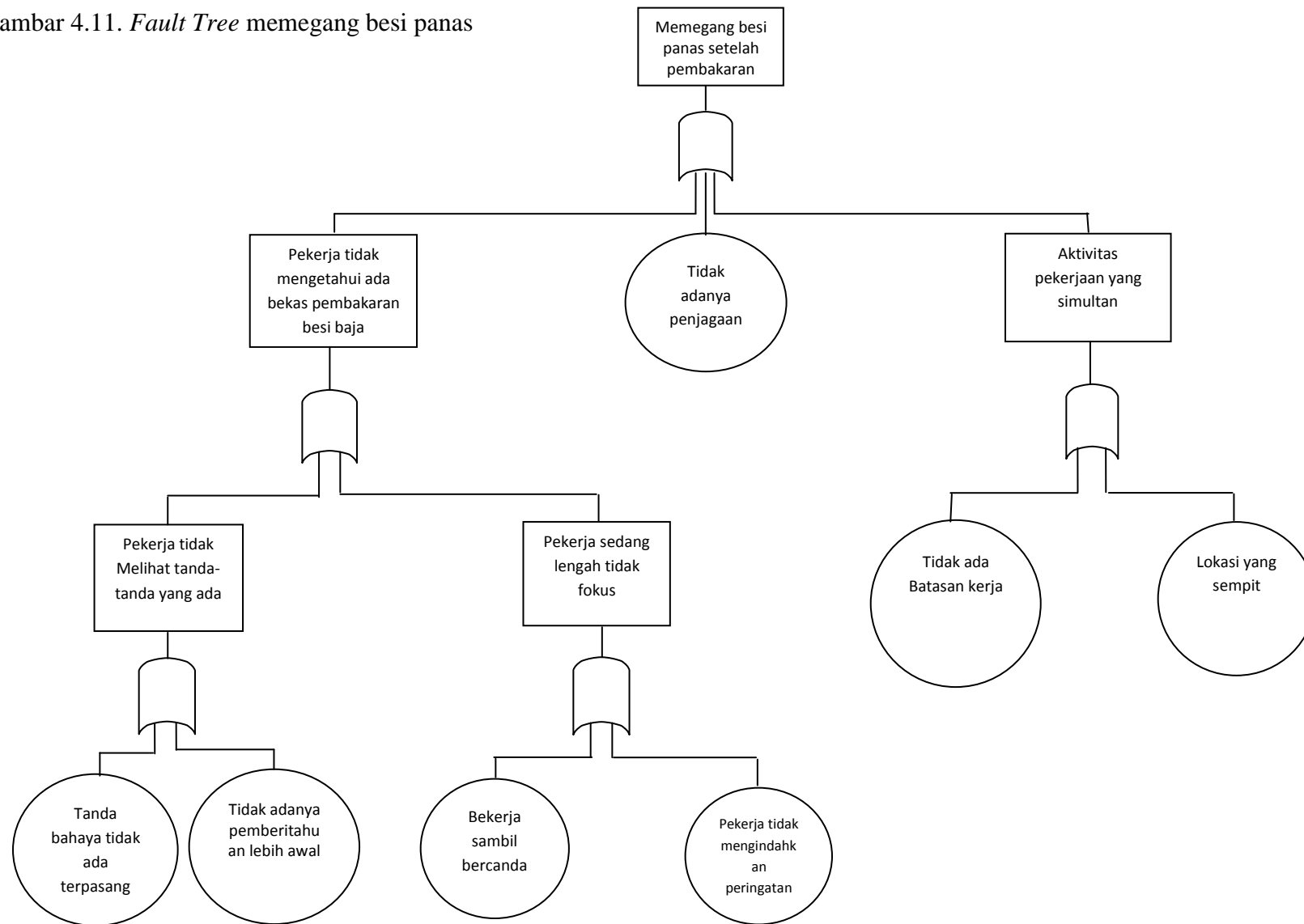
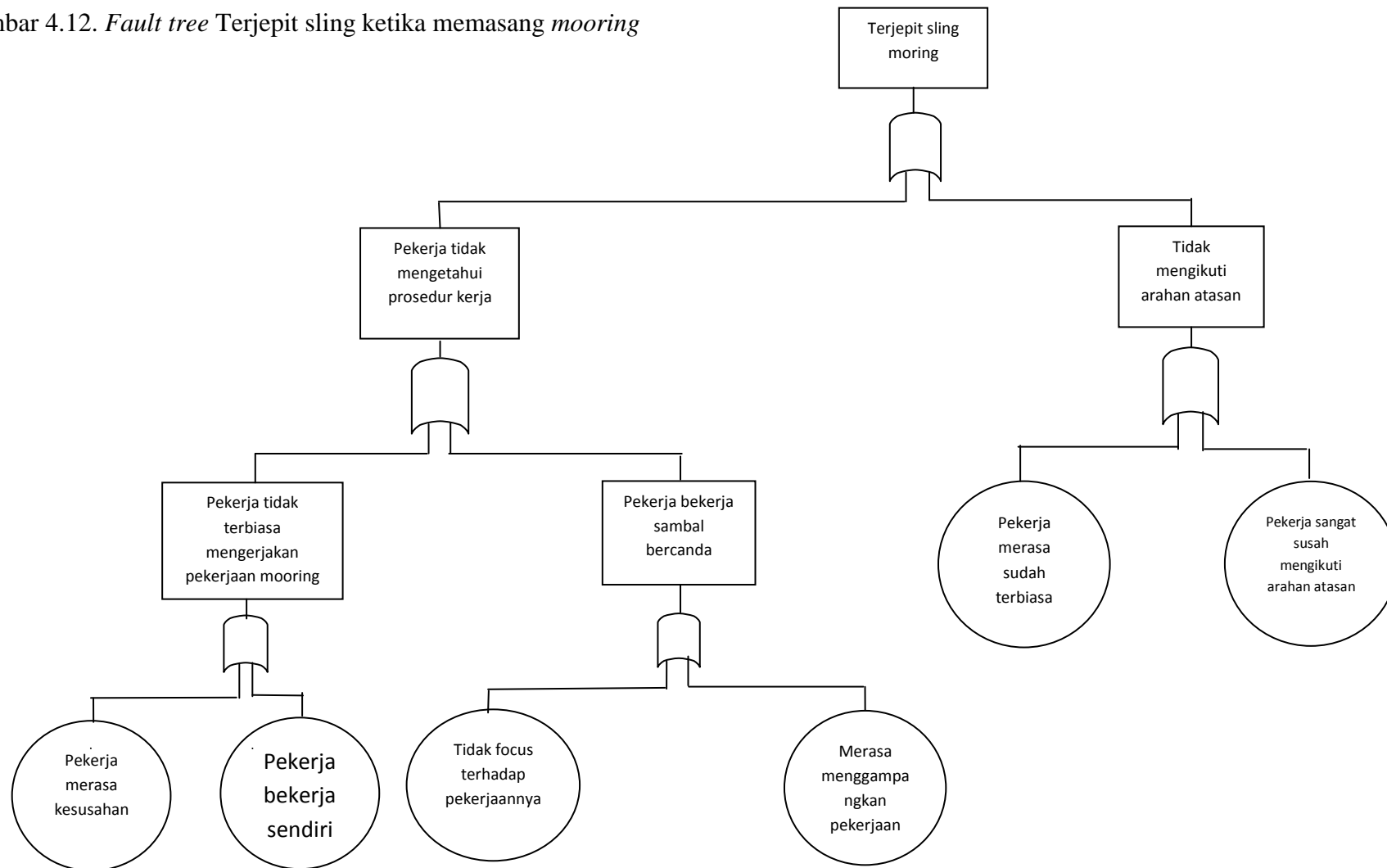
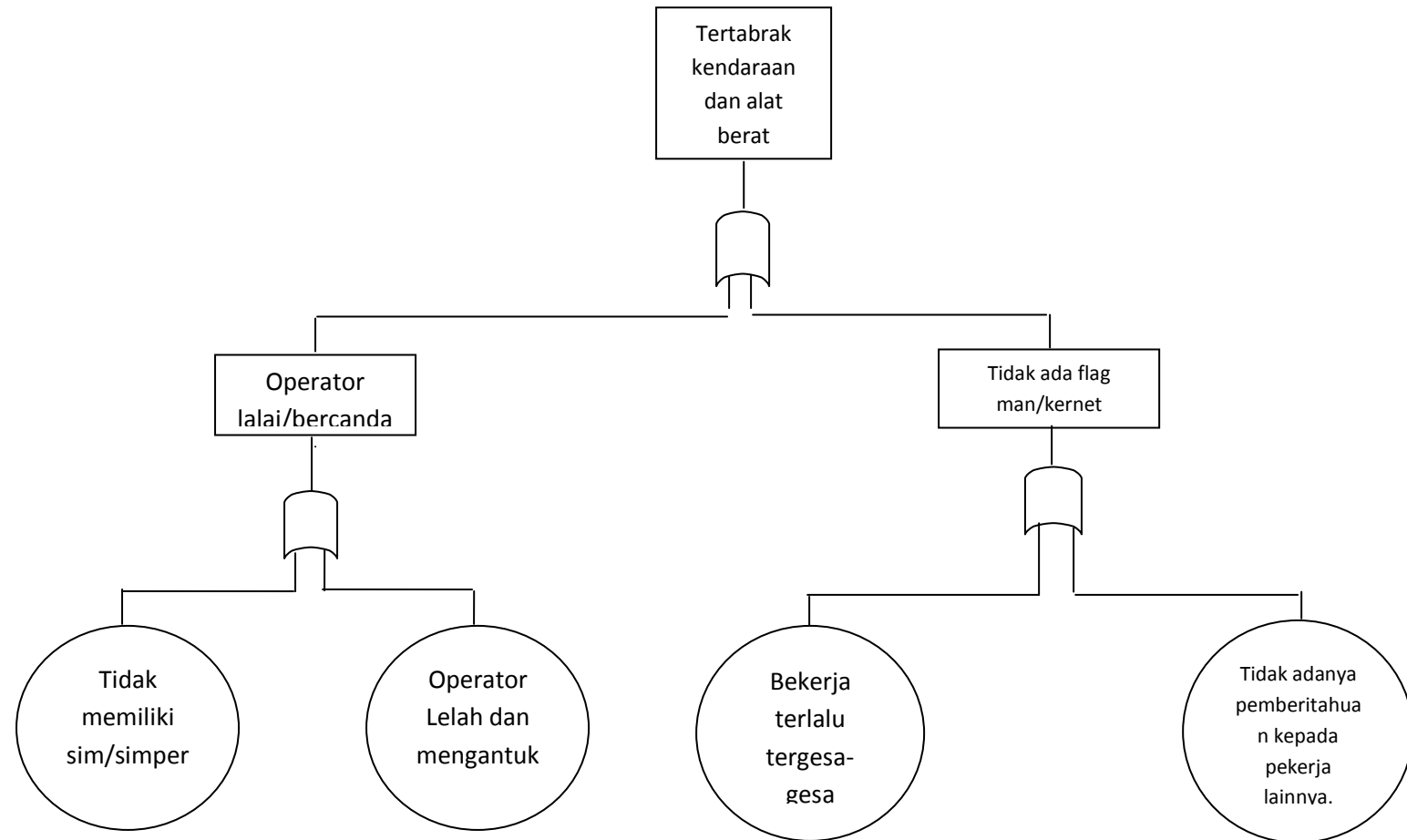


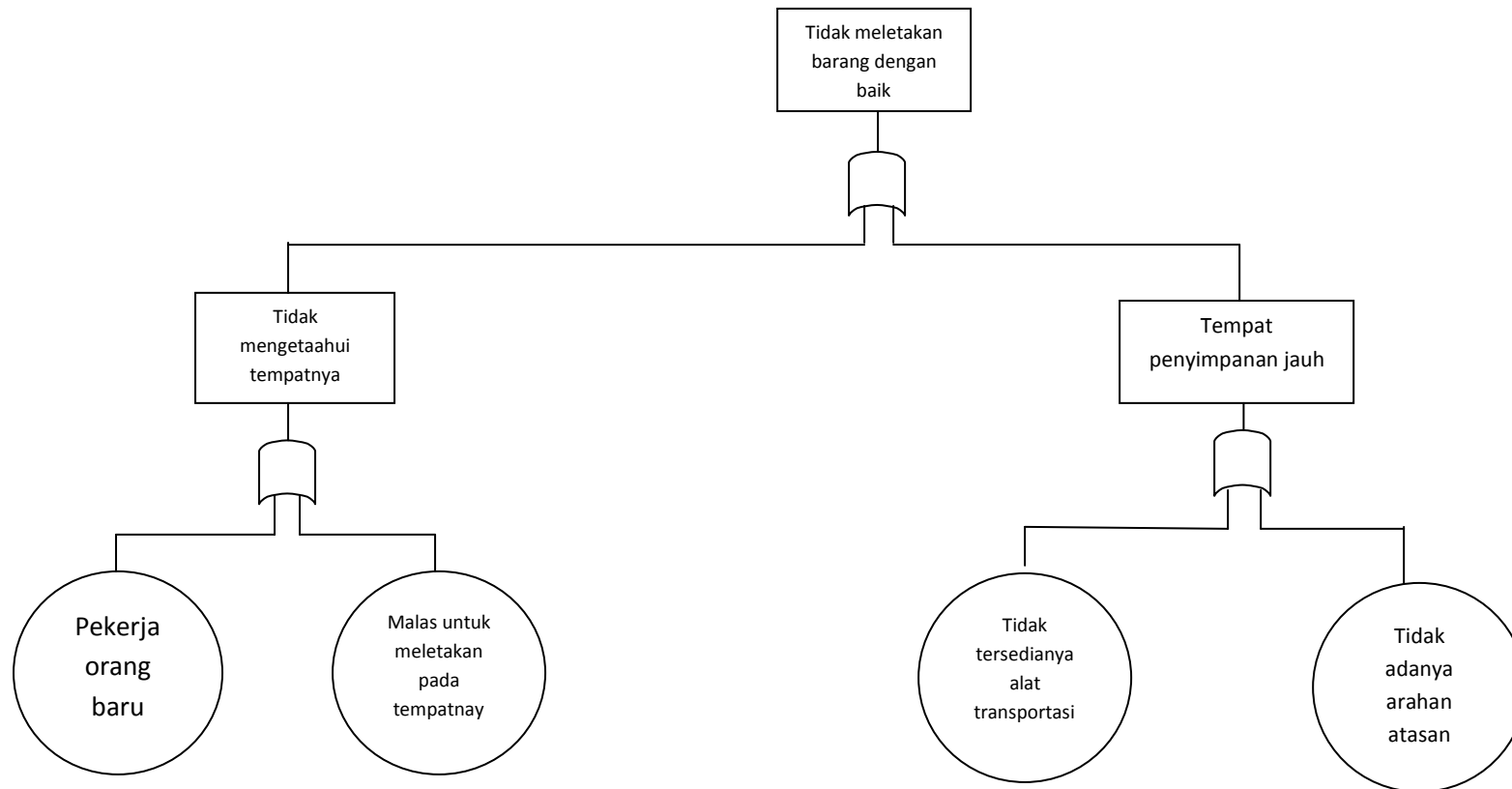
Gambar 4.11. *Fault Tree* memegang besi panas



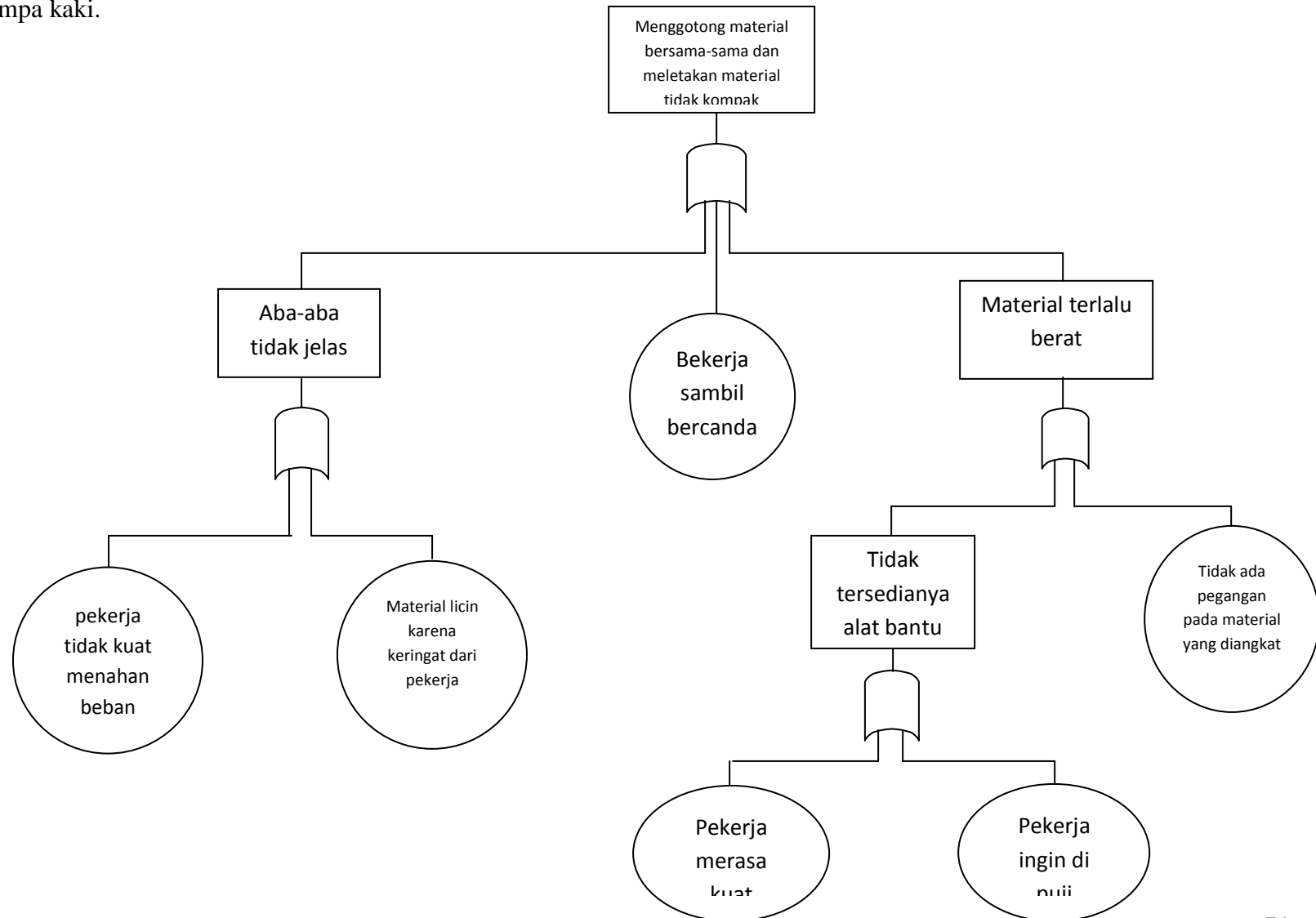
Gambar 4.12. *Fault tree* Terjepit sling ketika memasang *mooring*



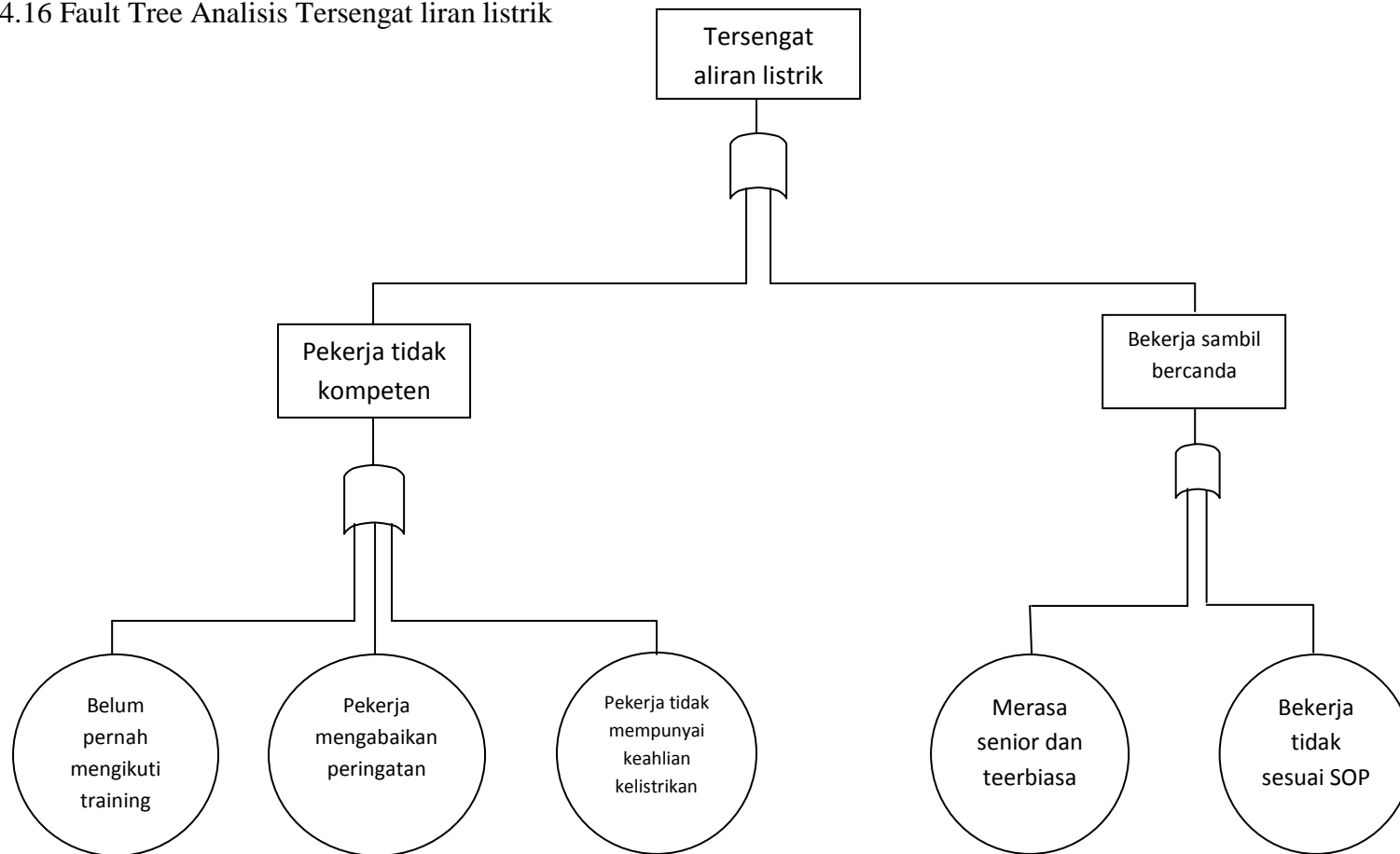
Gambar 4.13 *Fault Tree Analysis* tertabrak kendaraan dan alat berat

Gambar 4.14, *Fault Tree* tentang tidak meletakkan barang material dengan baik

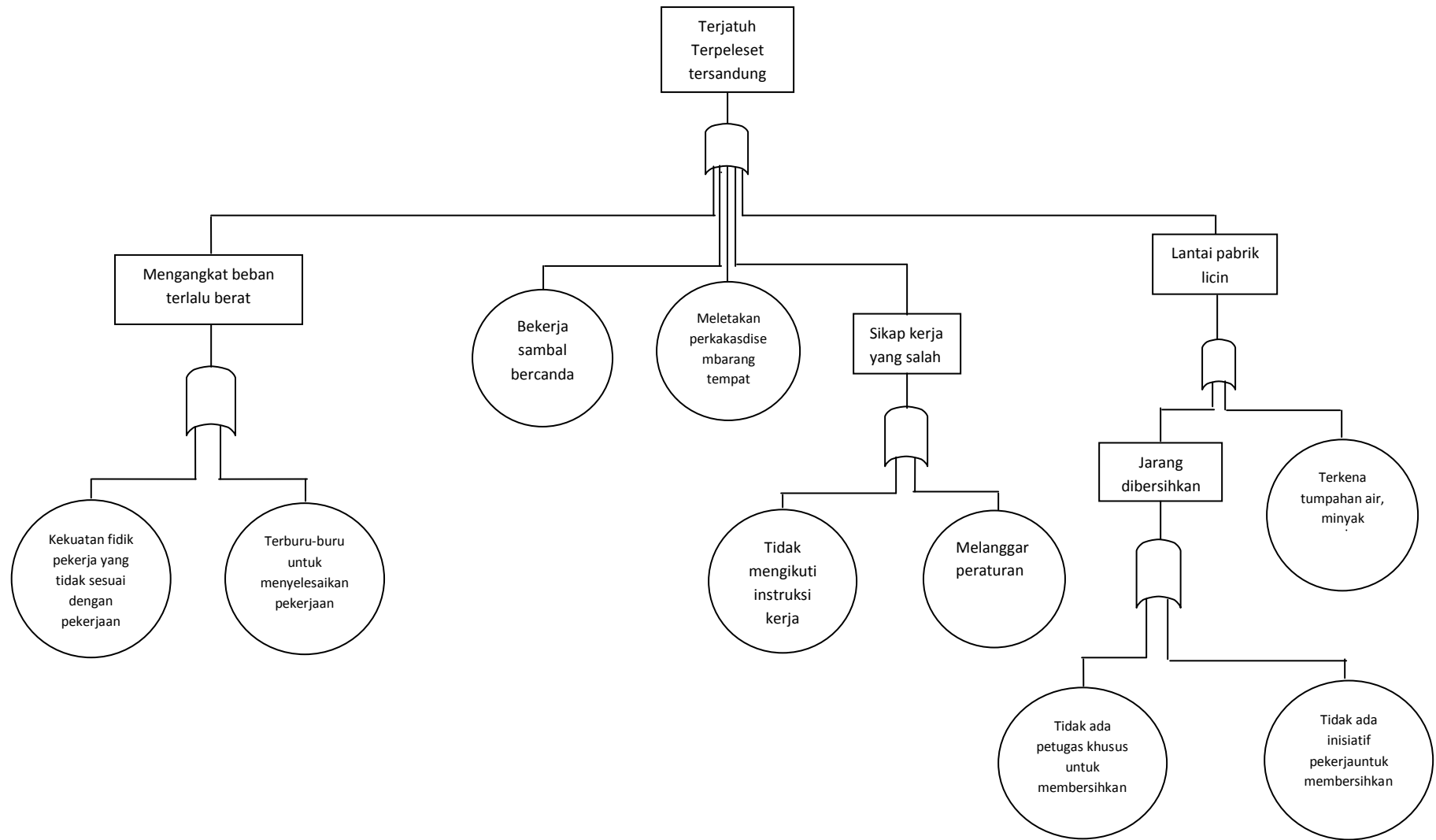
Gambar 4.15 *Fault Tree* Menggotong material secara bersama-sama dan meletakkan material tidak kompak mengakibatkan terlepas dari tangan dan menimpa kaki.



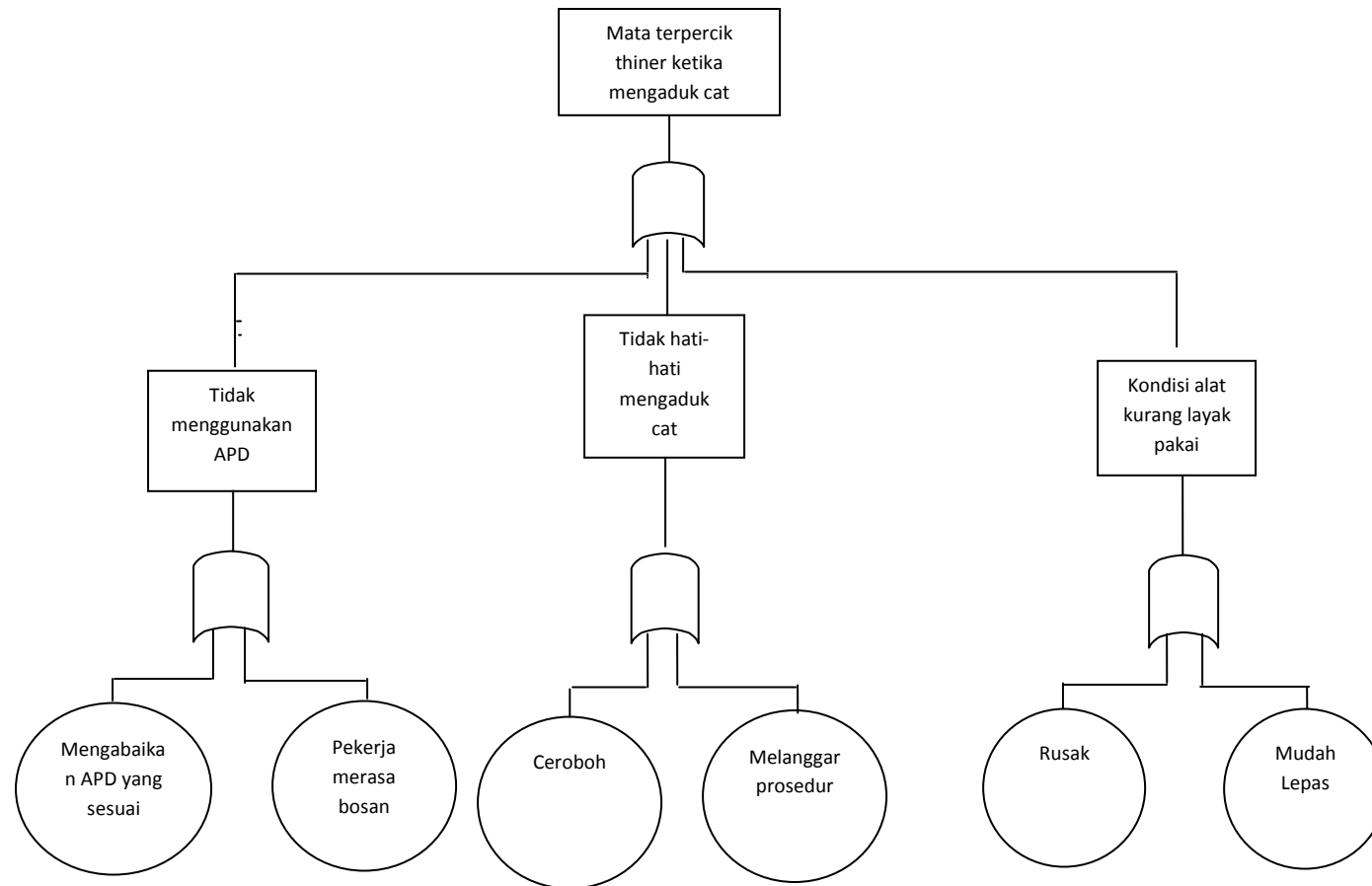
Gambar 4.16 Fault Tree Analisis Tersengat liran listrik



Gambar 4.17 *Fault Tree* Terjatuh, Terpeleset dan Tersandung

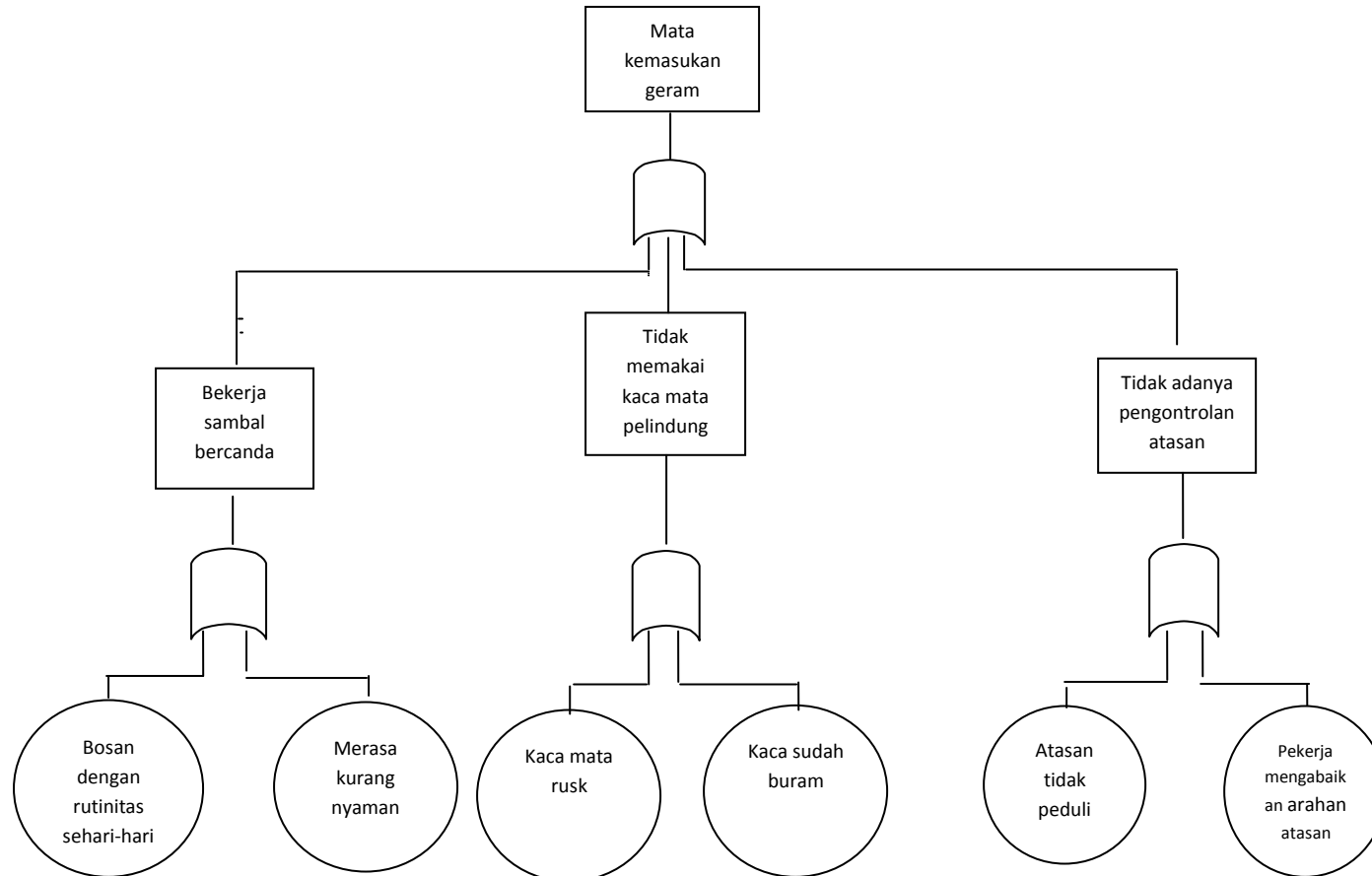


Gambar 41.8. *Fault Tree* mata terpercik thiner saat mengaduk cat

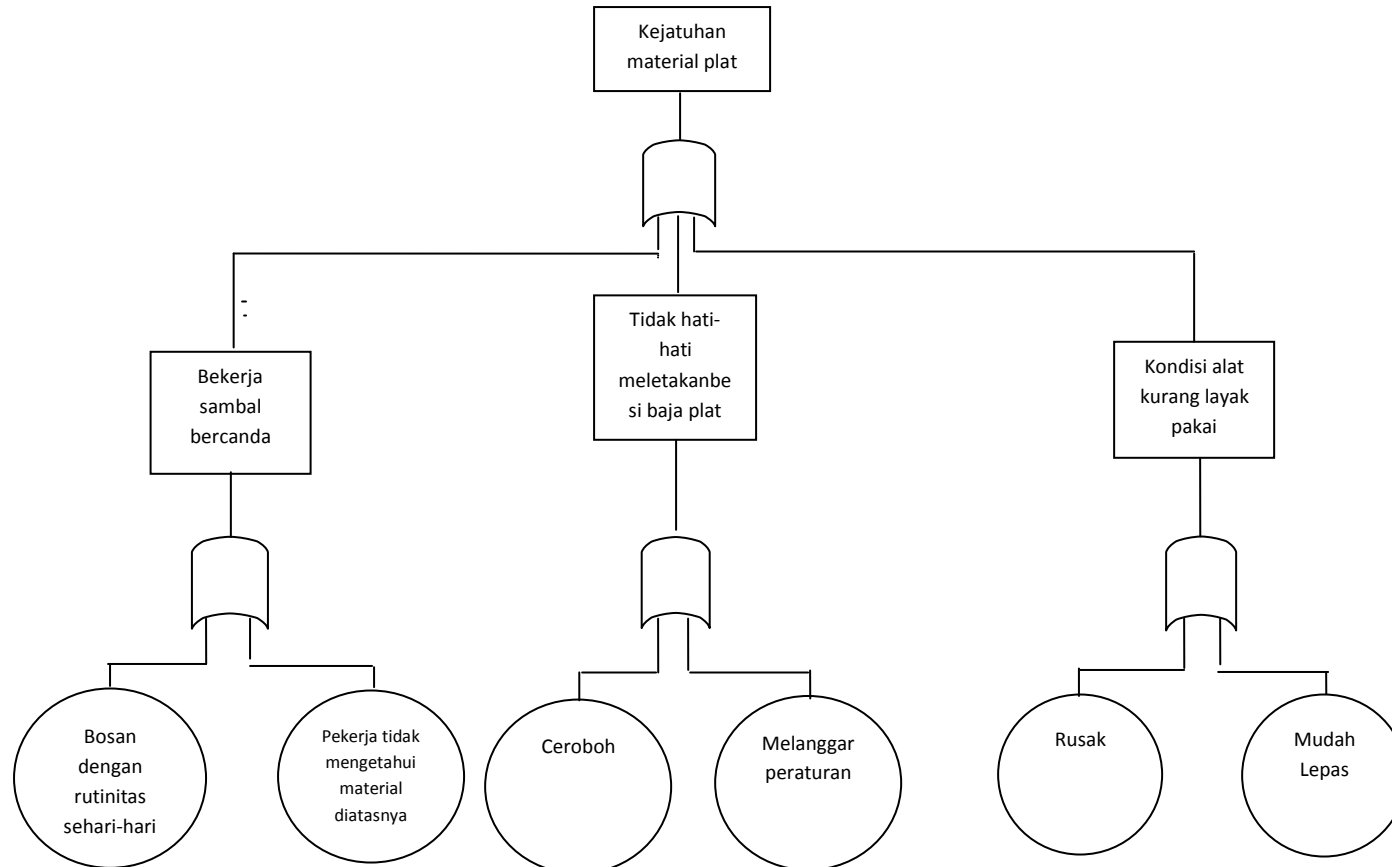




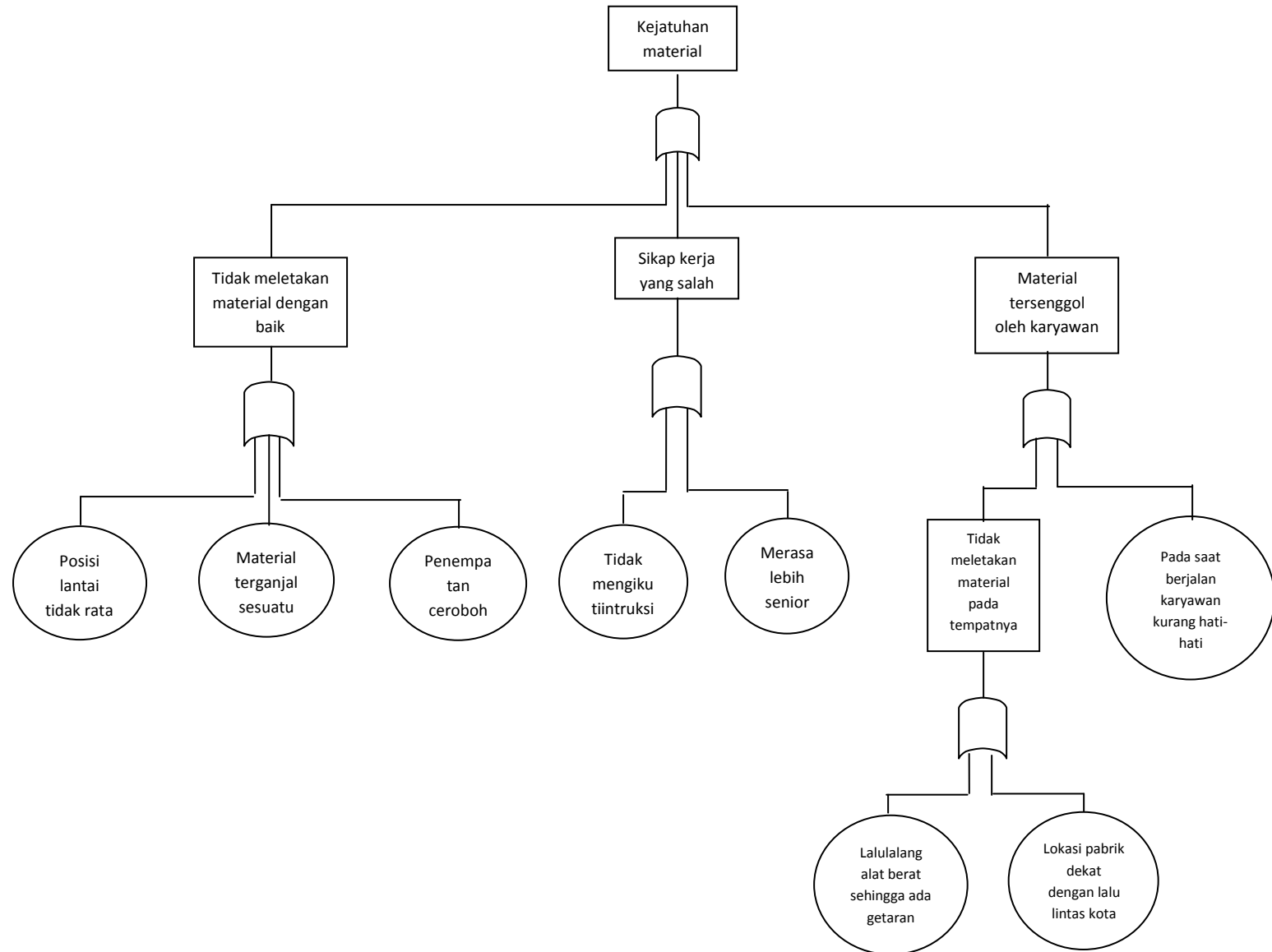
Gambar 41.9 *Fault Tree* mata kemasukan geram



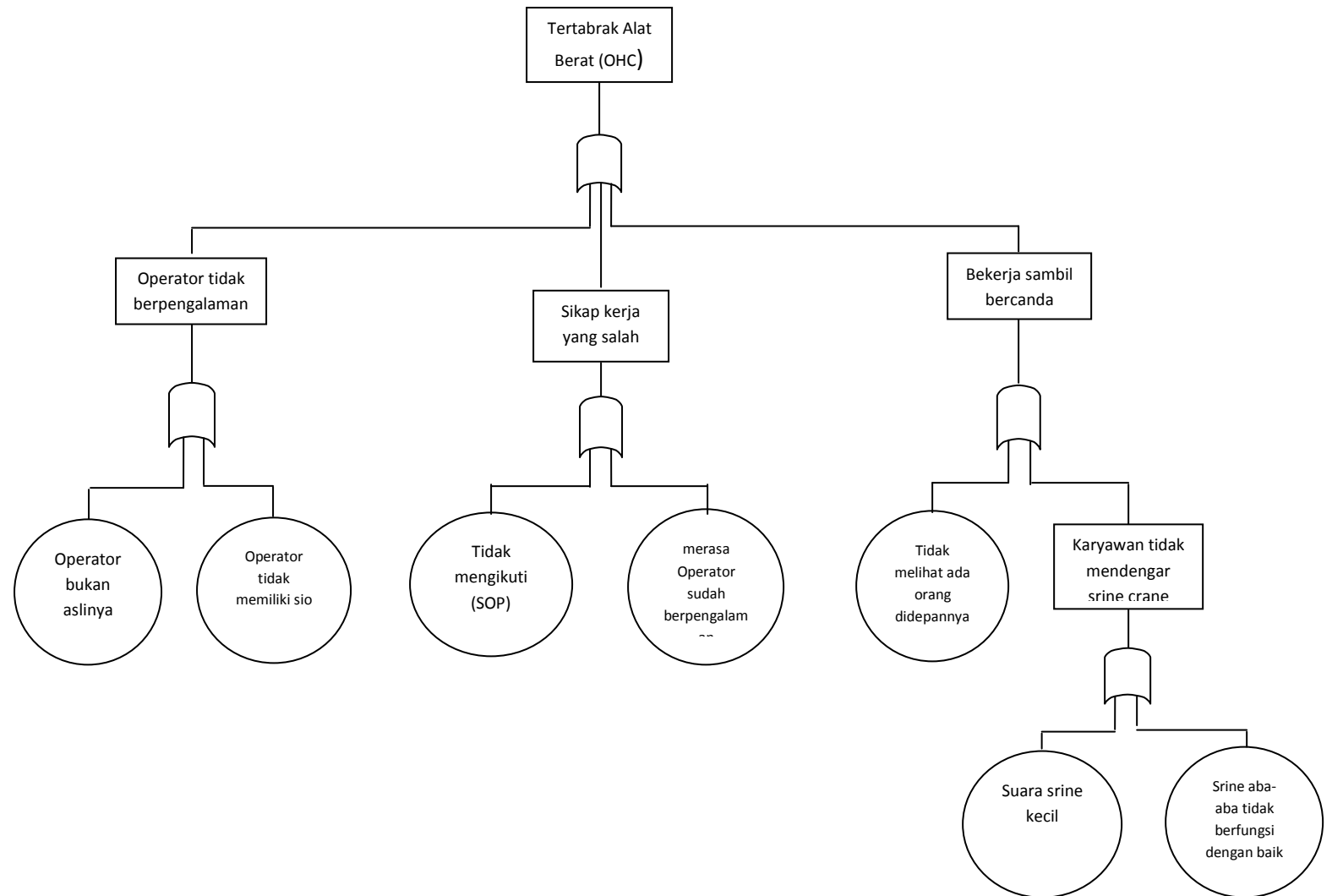
Gambar 4.20. *Fault Tree* kejatuhan potongan plat



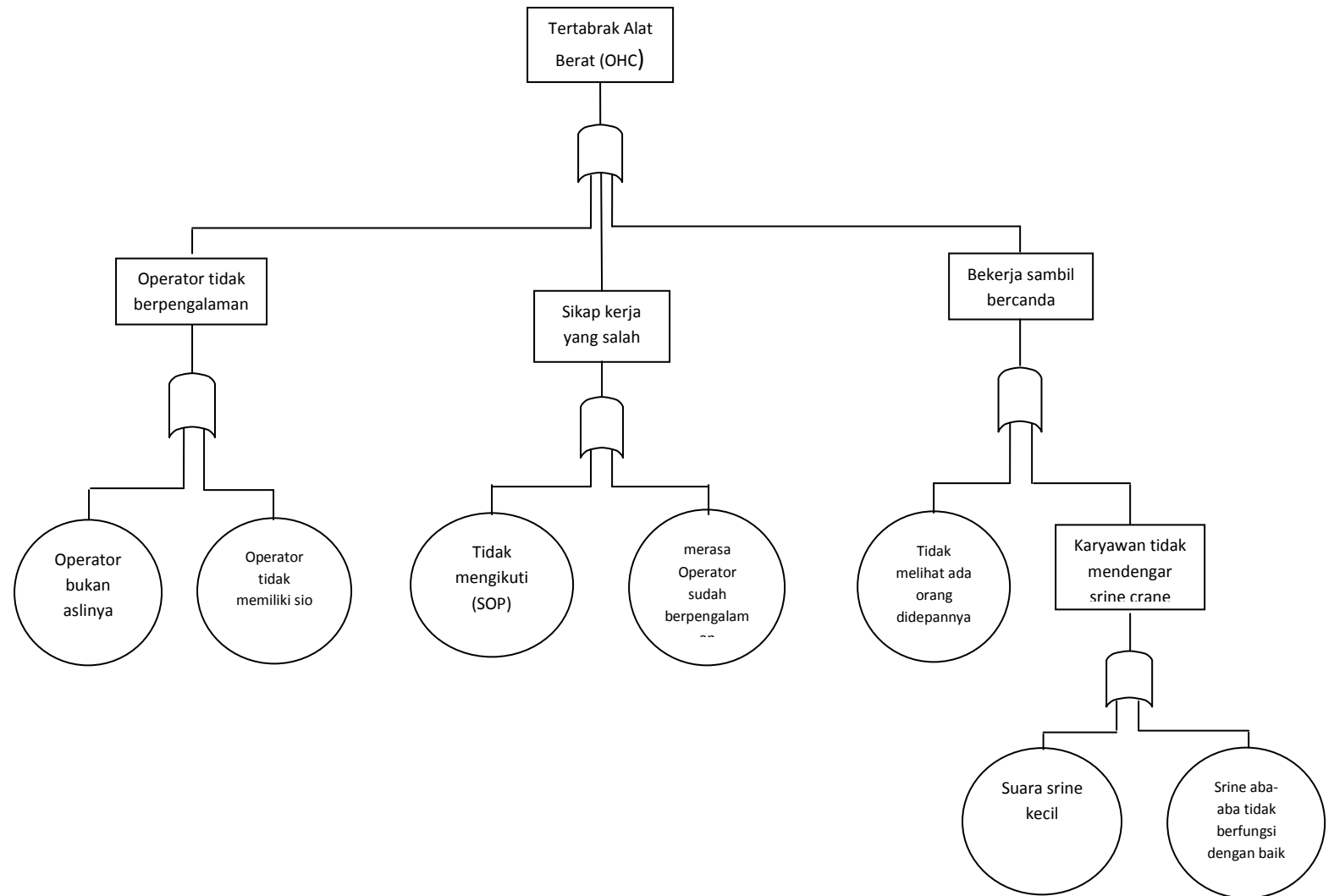
Gambar 4.21. Model Fault tree Kejatuhan Material.

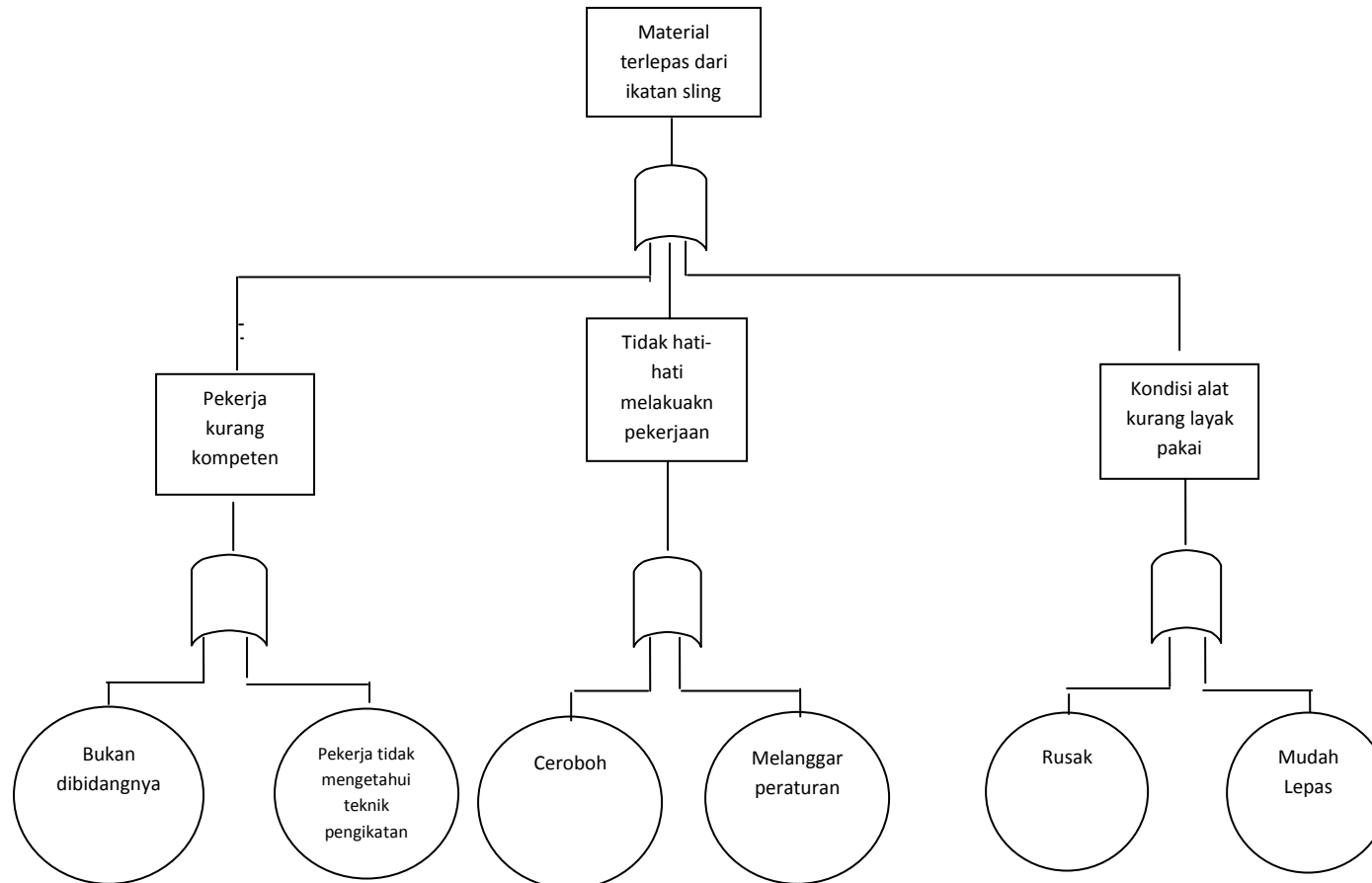


Gambar 4.22. *Fault Tree* Tertabrak Alat Berat Over Head Crane (OHC)

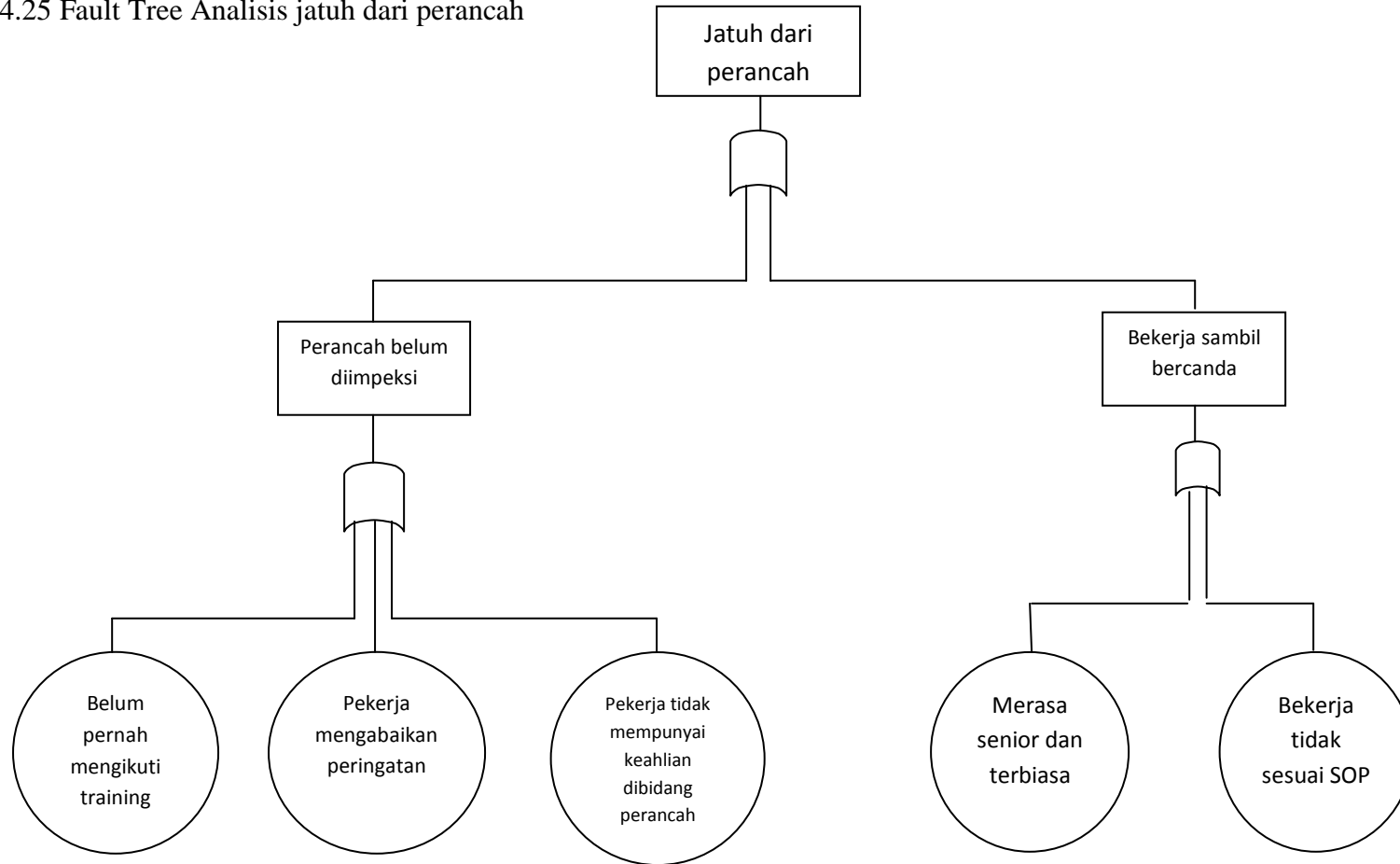


Gambar 4.23. Model *Fault Tree* Tertabrak Alat Berat Over Head Crane (OHC)

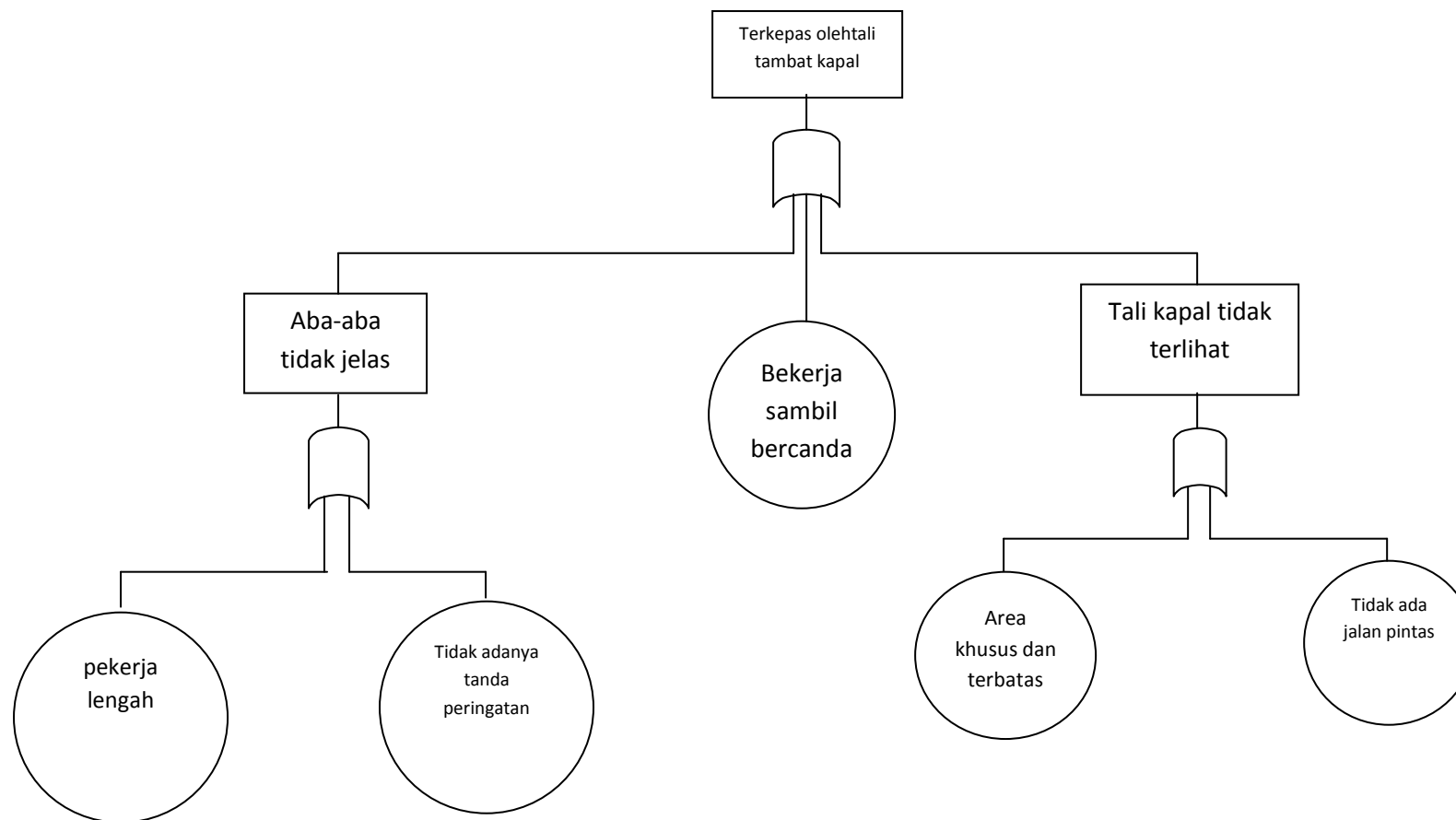


Gambar 4.24. *Fault Tree* material terlepas dari sling rantai.

Gambar 4.25 Fault Tree Analisis jatuh dari perancah

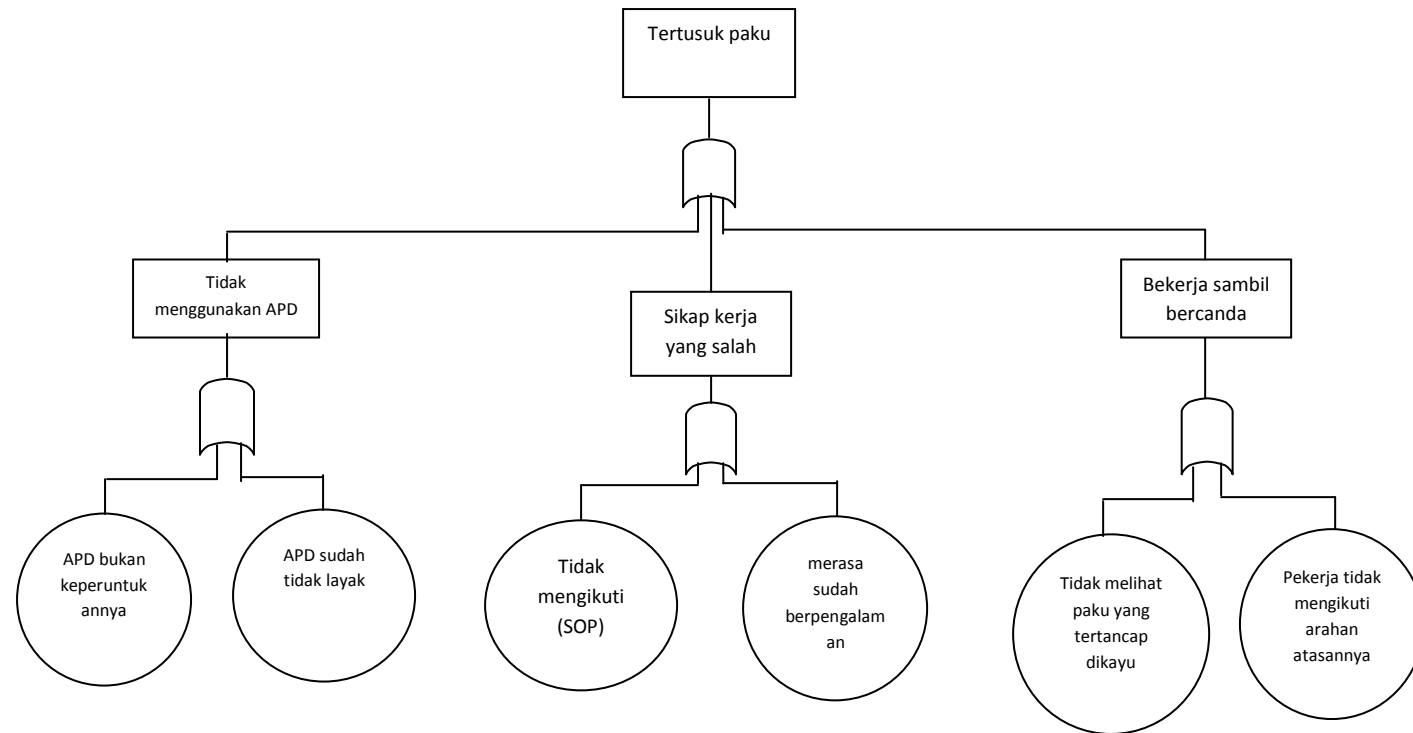


Gambar 4.26 *Fault Tree* terkepas tali tambat kapal





Gambar 4.27. *Fault Tree Analysis* tertusuk paku



Gambar 4.28 *Fault Tree* pengecatan diruang terbatas

